



## 445 • Front frame and transparent cover



### Front frame 96 x 96 with integrated seal

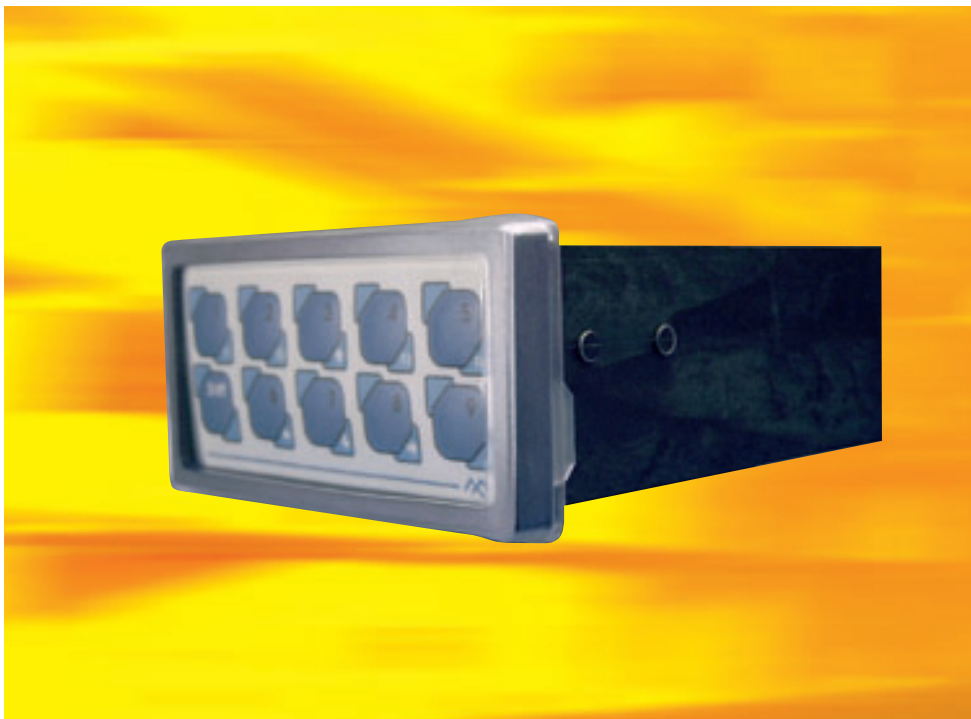
- The new front frame with integrated sealing is a perfect combination of design and functionality.
- The sealing, which is laid in foam on the inside, provides secure sealing between enclosure and panel instrument
- Injection-moulded snap-fits ensure a solid attachment to the enclosure

**Material:**  
PC black (other colours on request)

**Delivery:**  
Frame with integrated seal

**Degree of protection:** IP 54

Part no.
44-5316-30



### Transparent cover

- reliable protection against outer defects
- quick and easy fixation without tools
- no unintended movement because of special flaps at the edges
- soft and flexible transparent material enables operation of keys, front foils,...
- can be retrofitted easily on instruments that are already in use
- 144 x 72 mm, 144 x 96 mm, 96 x 48 mm (other sizes on request)

**Material:**  
plasticised PVC

**Protection:** IP 65

Dimensions	Part no.
144 x 72 mm	44-5279-00
144 x 96 mm	44-5339-00
96 x 48 mm	44-5179-00